



WHAT'S NEW IN STEALTHWATCH® SYSTEM™ 6.0

The StealthWatch System by Lancope® enables organizations to resolve problems quickly by providing actionable insight into network, security and data center operations. Combining powerful network performance monitoring and behavior-based anomaly detection, StealthWatch delivers total network visibility from a single, integrated platform across physical and virtual environments.

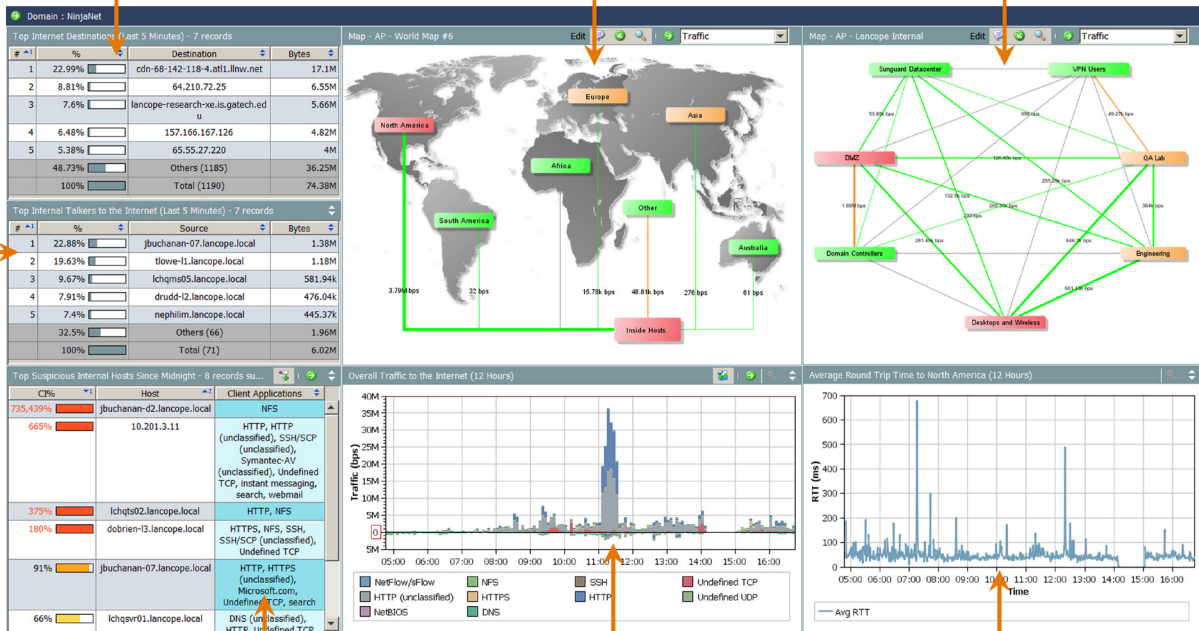
StealthWatch System 6.0 reaches deeper into the enterprise to deliver unified visibility, removing borders between the various IT teams and enhancing cooperation and efficiency. Bringing these disparate groups together, StealthWatch helps them maximize resources and minimize costs to better manage application performance, network operations and security.

Highlights:

- ▶ Provides end-to-end visibility into all application and network traffic across physical and virtual networks
- ▶ Reduces Mean Time to Know (MTTK)
- ▶ Accelerates problem resolution
- ▶ Improves reporting for management overviews down to granular forensic data
- ▶ Extends the benefits of flow analysis

Advanced Reporting With Exclusions

Business Relationship Traffic Mapping



Application-Aware Reports, Context and Alerts

Performance Metrics Include Applications

StealthWatch 6.0 customizable dashboards provide actionable insight into network traffic.

Identify Which Applications Comprise Your HTTP Traffic

With the advent of Web 2.0, as much as 85% of all network traffic is now going through port 80. As a result, distinguishing between individual applications has become increasingly difficult. To optimize performance and secure the network, both network operations and security teams need to know what, when and how applications are in use across the enterprise. StealthWatch answers the following questions:

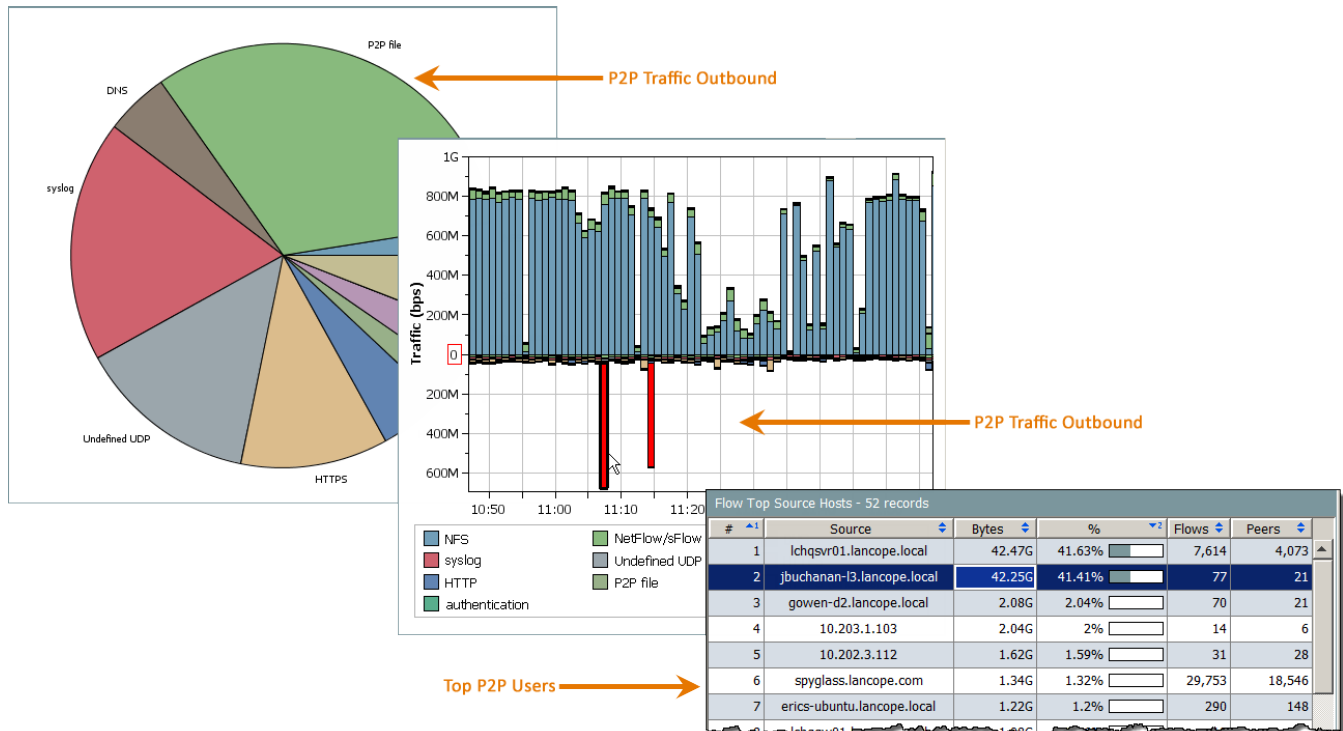
Network Operations

- ▶ Which application consumes the majority of network traffic?
- ▶ What business-critical applications are not performing as required?
- ▶ What impact is social networking having on the network?
- ▶ Which application is causing a network performance issue?

Security Operations

- ▶ Where is all the P2P traffic?
- ▶ Do any tunneling applications exist on the network?
- ▶ Which employee is using an unauthorized application?
- ▶ Who is abusing corporate social networking policies?

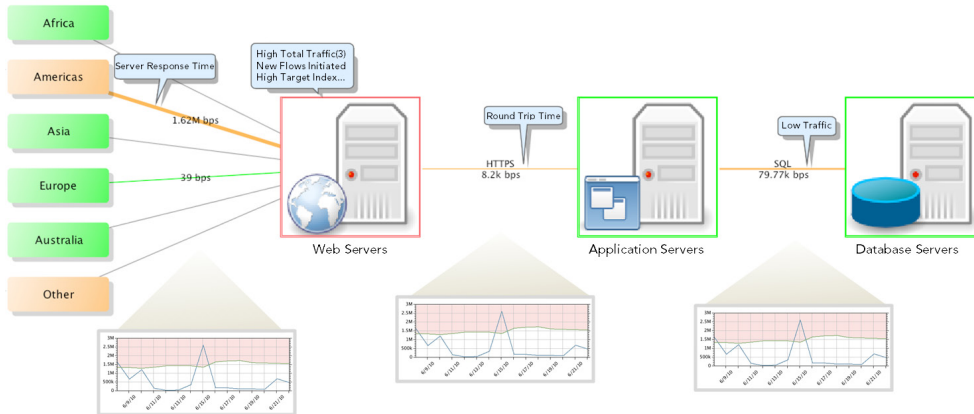
StealthWatch 6.0 brings true Layer 7 application visibility to network and security teams by gathering application information and packet-level metrics from the StealthWatch FlowSensor or from other data sources, including NBAR. In addition, administrators can manually define their own custom applications based on IP addresses. For example, one group of IP addresses can represent all of the Exchange servers in the organization. Another group of IP addresses can represent all of the DNS servers, and so on.



StealthWatch 6.0 provides valuable insight into application activity, such as P2P traffic. At a high-level, managers can see how much of their overall traffic is comprised of P2P. Drilling deeper, operators can see when this activity took place and which users were involved.

Diagnose Performance Issues: Application vs. Network vs. Security

Without knowing what is normal for application and network performance in physical and virtual environments, network and security teams cannot determine when latency is a problem. StealthWatch 6.0 analyzes packet-level performance statistics from the StealthWatch FlowSensor to build a baseline of normal application and network performance. If performance degradation occurs, StealthWatch automatically alerts operators and helps isolate the root cause within seconds to a specific application, network or security issue.



StealthWatch 6.0 enables operators to see and resolve performance issues quickly and easily.

In addition, applications can carry viruses, worms and other malware that can impact performance. StealthWatch zooms in on any unusual behavior such as this and immediately sends an alarm with the contextual information necessary for security personnel to take quick, decisive action to mitigate any damage.

Accelerate Problem Resolution with Relational Flow Maps

With real-time, customizable relationship flow maps, StealthWatch 6.0 provides network operations and security teams with graphical views of the current state of the organization's traffic. Within seconds, these teams can see exactly where to focus their attention by knowing the answers to key questions, such as:

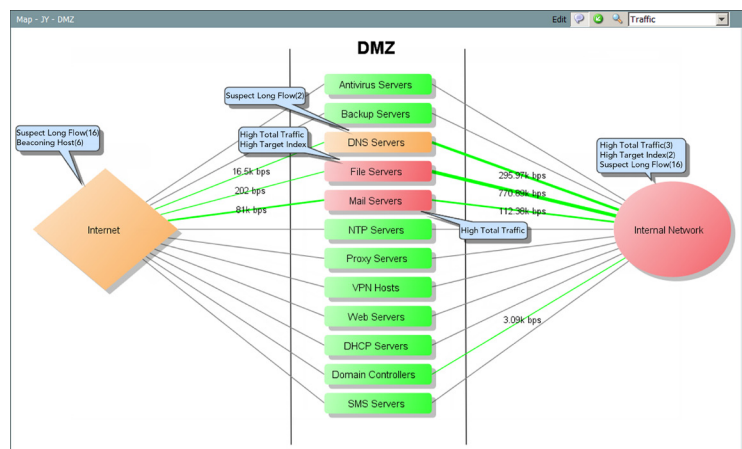
Network Operations

- ▶ Which area of the network is congested?
- ▶ Which application servers are not performing as required?
- ▶ How much traffic is crossing the WAN?
- ▶ Has a specific network change affected performance?
- ▶ Is the Internet working?

Security Operations

- ▶ What countries are attacking the network?
- ▶ Which PCI/HIPAA servers are talking to unauthorized machines?
- ▶ Are application servers communicating over the Internet?
- ▶ How does one security incident affect network performance?

StealthWatch 6.0 allows administrators to easily construct maps of their network based on any criteria, such as location, function or virtual environment. By creating a connection between two groups of hosts, operators can quickly analyze the traffic traveling between them. Then, simply by selecting a data point in question, they can drill down to gain even deeper insight into what is happening at any point in time.



Relationship flow maps enable network and security personnel to quickly identify areas that need attention.

Quickly Analyze Volumes of Data with Reports for Both Managers and Analysts

As networks become more sophisticated and complex, data becomes more and more voluminous. More data often means more time retrieving the pertinent information needed for troubleshooting and forensic analysis. Managers often want only a high-level overview of enterprise conditions without being overwhelmed with detailed data. Network operations and security teams can become frustrated while plodding through mountains of data to retrieve the nugget of detail they really need.

With 6.0, StealthWatch's reporting mechanism meets both requirements by combining more flexibility in the querying process with 1-minute granularity of flow data. This capability allows operators to run ad-hoc reports for arbitrary time frames, IP addresses and essentially any combination of criteria to access any data from high-level overviews down to specific flow details for any situation.

Improve Policy Management Through Flexible Host Organization

With 6.0, StealthWatch introduces host groups that allow administrators to place a host in as many groups as necessary. They can also organize hosts in any way that makes sense for their organization, such as by function or topology. With this freedom, organizations gain unlimited flexibility in terms of reporting and traffic management. In addition, policy management is much easier, allowing organizations to set policies for hosts based on the roles those hosts play in the network.

To learn more or request a demo, contact sales@lancope.com

About Lancope, Inc.

Lancope®, Inc. is a leading provider of flow-based monitoring to ensure high-performing and secure networks for global enterprises. Unifying critical network performance and security information for borderless network visibility, Lancope provides actionable insight that reduces the time between problem identification and resolution. Enterprises rely on Lancope to make better network decisions, respond faster to network problem areas and avoid costly outages and downtime — at a fraction of the cost of conventional network monitoring solutions.

Lancope Headquarters

3650 Brookside Parkway
Suite 400
Alpharetta, GA 30022

U.S. Sales

+1.770.225.6500
888.419.1462

International Sales

+44 (0)560 344 8075

Website: www.lancope.com

E-mail: sales@lancope.com

©2011 Lancope, Inc. All rights reserved. Lancope, StealthWatch and other trademarks are registered or unregistered trademarks of Lancope, Inc. All other trademarks are properties of their respective owners.

DSV112032010